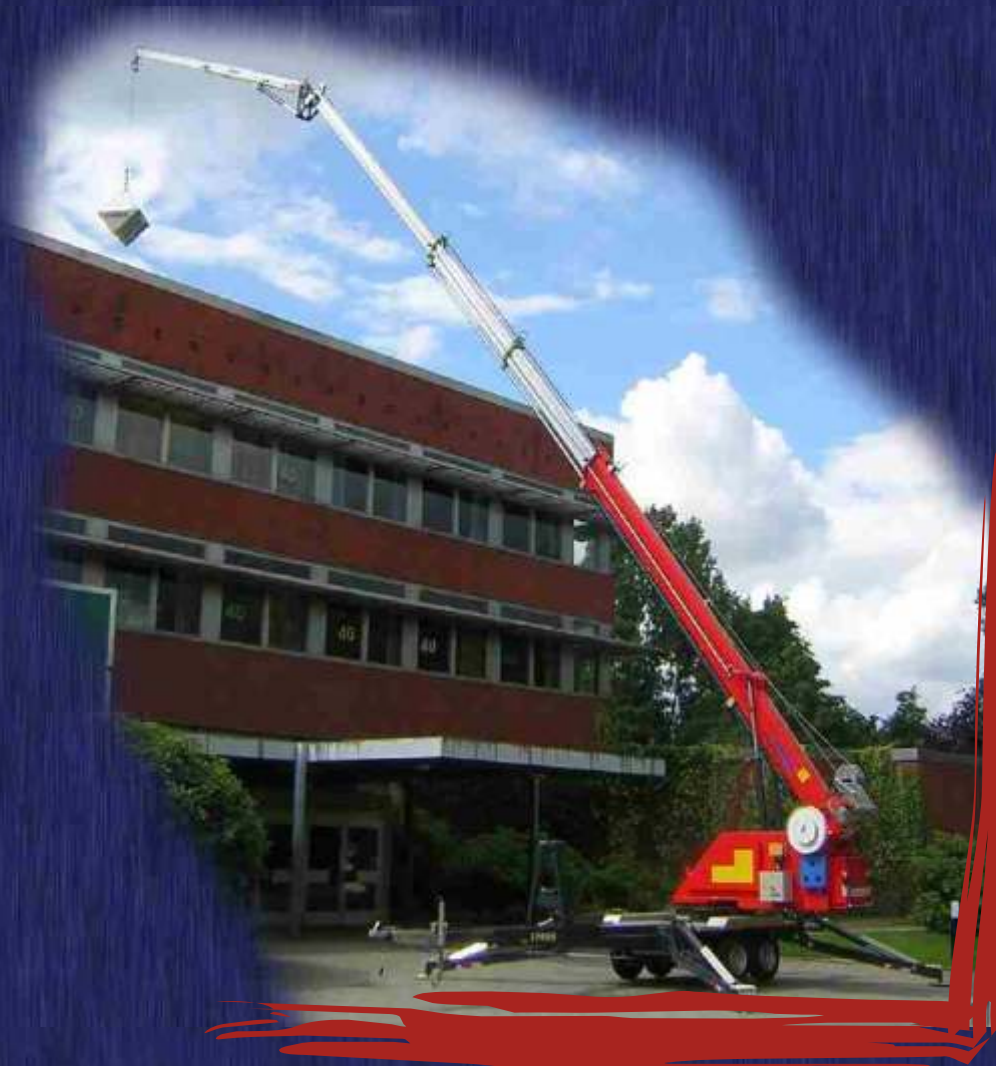


# SKYWORKER

Aluminium Trailer Crane



# SKYWORKER

Aluminium Trailer Crane

... a light crane  
for heavy loads!

up to 30 meters height!



hydraulic wheel drive for difficult terrain



variable folding supports allow extreme ground clearance at the highest degree of safety



double lifting cylinders and endless turntable for precise working



swivelling supports for minimum setting-up space required



digital display (e.g. for supports control)

# SKYWORKER

Aluminium Trailer Crane





Due to the hydraulic head jib even working under extremely difficult circumstances is possible

hydraulic toggle-knee joint

## Highlights

- fully hydraulic with head jib
- closed aluminium profiles for even more stability
- easy maintenance by extractable engine
- extremely easy handling via radio-telecontrol
- payloads up to 1200 kg
- excellent driving and maneuvering qualities
- precise working even at a height of 30 m

closed profiles out of high-resistant aluminium

proportional hydraulic system for precise working



variable supports system



hydraulic toggle-knee joint allows variation of the articulation angle from 0° to 172°



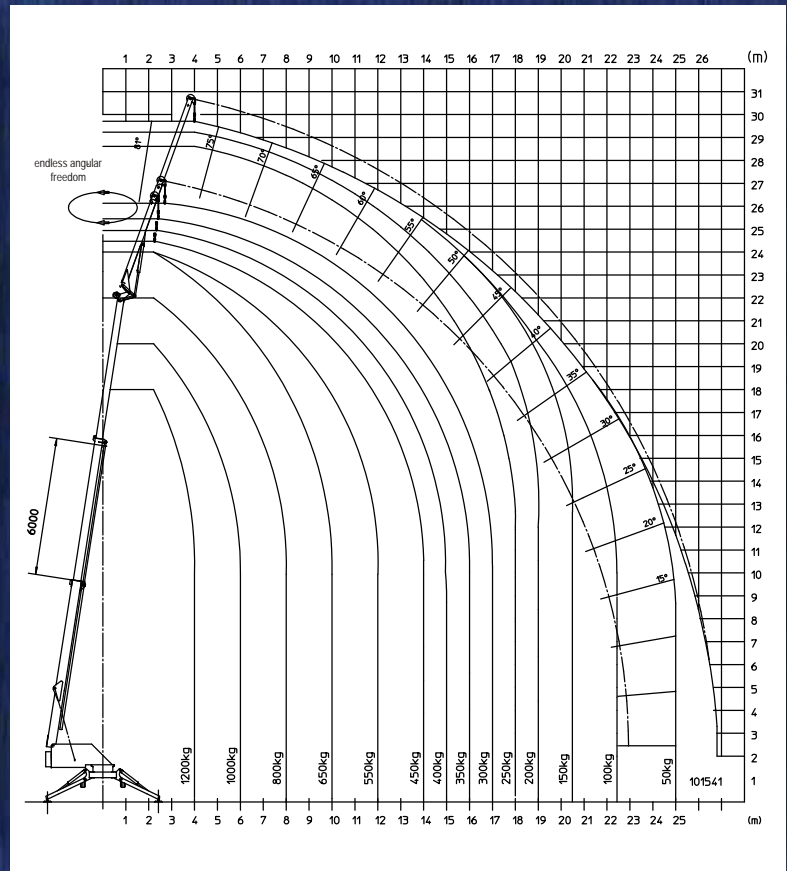
easy handling of the radio-telecontrol with integrated visual loading indicator



easy maintenance by extractable engine which can additionally be used as counterweight

# Technical Data

Height of hook	30,00 m appx.
Jib angle	0° - 172° appx.
Angle of telescopic arm	10° - 82° appx.
Rope speed	0 - 45 m/min appx.
Drive	Honda gasoline/option Diesel
Angular freedom	360° endless
Supporting width	4,90 m appx.
Supporting length	4,90 m appx.
Max. carrying capacity	1.200 kg appx.
Transport width	2,10 m appx.
Transport height	2,40 m appx.
Transport length with twobar	9,10 m appx.
Axle load	3,5 tons appx.
Total weight with basic equipment	3.490 kg appx.



All specifications without engagement. Our machines correspond to the latest European Safety Directives. We reserve the right to effect changes in design.



Easy transportation: the SkyWorker can be transported by means of an usual vehicle trailer



Hermann Paus Maschinenfabrik GmbH  
 Siemensstraße 1-9 · 48488 Emsb. ren  
 Telefon: (0 59 03) 7 07 - 0  
 Telefax: (0 59 03) 7 07 - 33  
 info@paus.de  
 www.paus.de

Your Distributor:

OU Lasref Engineering  
 Tuha 3, Tallinn, Estonia, 11415  
 Tel (+372) 697 93 05  
 Fax (+372) 697 93 05  
 E-mail info@paus.ee  
 Web www.paus.ee